

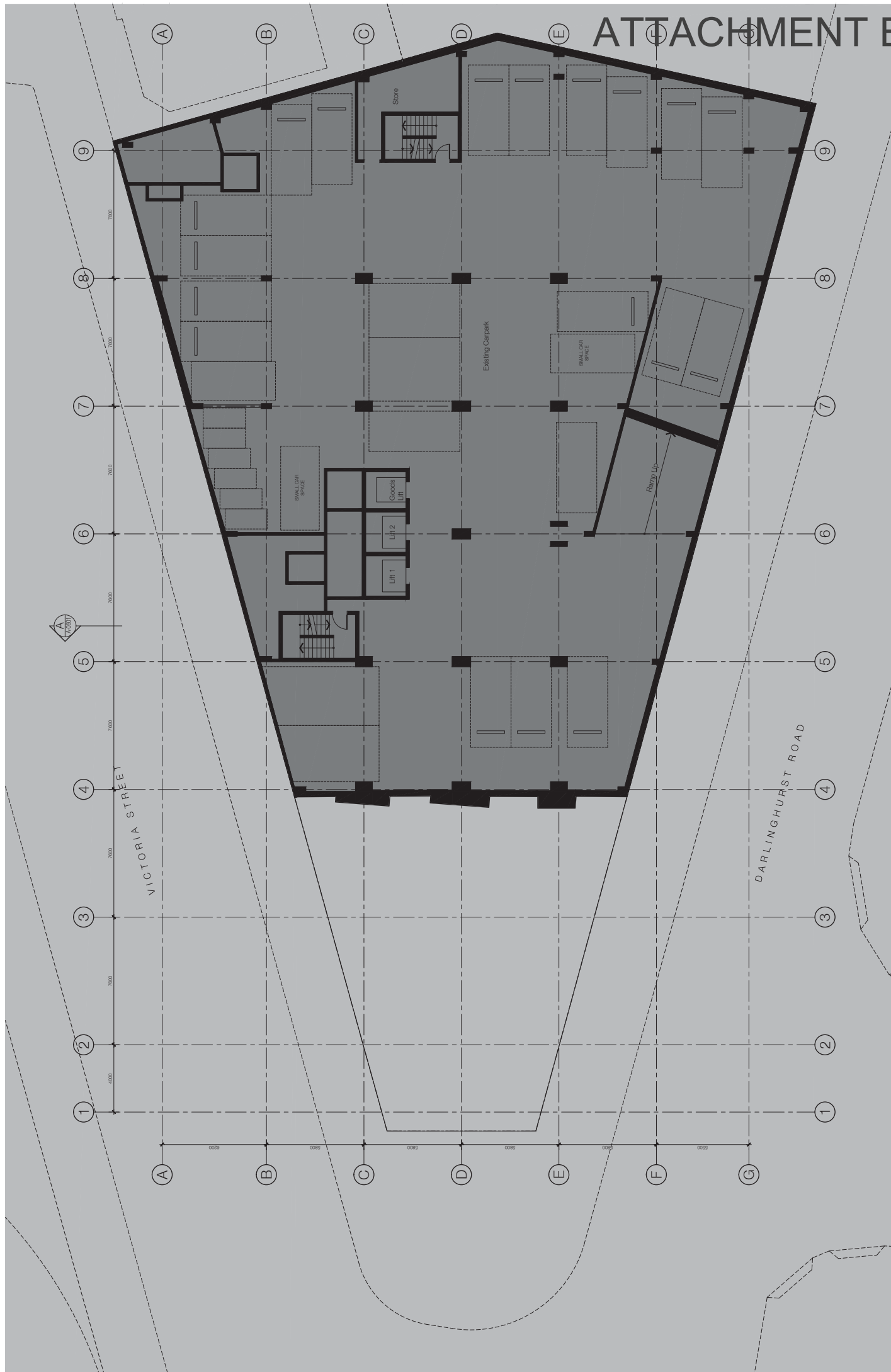
ATTACHMENT B

ATTACHMENT B

SELECTED DRAWINGS

**111-139 DARLINGHURST ROAD
POTTS POINT**

ATTACHMENT B



FOR APPROVAL

Not for construction

As per submission 718 - 10/11/2014

Existing envelope to change proposed
 Existing envelope, change of use
 Existing envelope, modified
 Addition to existing envelope

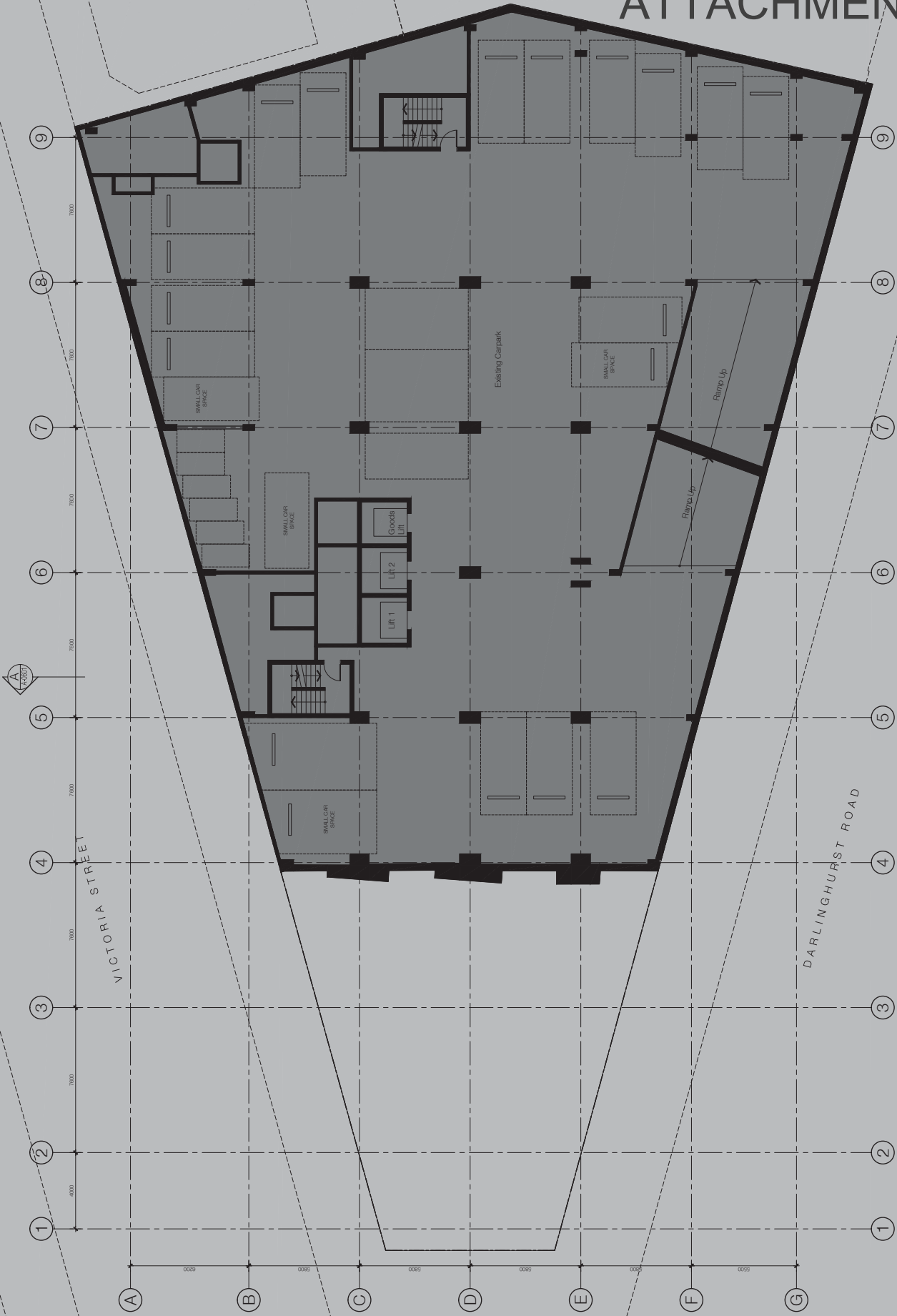
Rev.	Date	Revision	By	Date	Revision	By	Date	Revision	By	Date	Revision	By	Date	Revision
01	11.01.13	Final/Rev 1/1/13	CP AH											
02	30.10.13	Stage 1/30/10/13	CP AH											

Project: Mixed Use Development
 111 Darlinghurst Road
 Potts Point
 Darlinghurst
 Floor Plans
 Basement.03

Date: 30.10.2013
 Scale: 1:100
 Drawn: SH
 Checked: AH
 Job No.: 4932
 Drawing No.: A-0201 / 02

SUBMITTERS
 Level 2
 400 Crown Street
 2014 Australia
 Phone: +61 (0)2 9250 1022
 www.p.com.au

ATTACHMENT B



SUBMITTERS		Sheet Size
Drawn	SH	@ A1
Checked	AH	
Project	Mixed Use Development	
Date	30.10.2013	
Scale	1:100	
Drawn	SH	
Checked	AH	
Project	111 Darlinghurst Road	
Date	30.10.2013	
Scale	1:100	
Drawn	SH	
Checked	AH	
Project	Potts Point	
Date	30.10.2013	
Scale	1:100	
Drawn	SH	
Checked	AH	
Project	Floor Plans	
Date	30.10.2013	
Scale	1:100	
Drawn	SH	
Checked	AH	
Project	Basement.02	
Date	30.10.2013	
Scale	1:100	
Drawn	SH	
Checked	AH	

Rev.	Date	Revision	By	Date	Revision	By
01	11.10.13	Final/Rev 1 (A1 Issue)	CP AH			
02	30.10.13	Stage 1 (A1 Issue)	CP AH			

Rev.	Date	Revision	By	Date	Revision	By
01	11.10.13	Final/Rev 1 (A1 Issue)	CP AH			
02	30.10.13	Stage 1 (A1 Issue)	CP AH			

Existing envelope to change proposed
 Existing envelope, change of use
 Existing envelope, demolished
 Addition to existing envelope

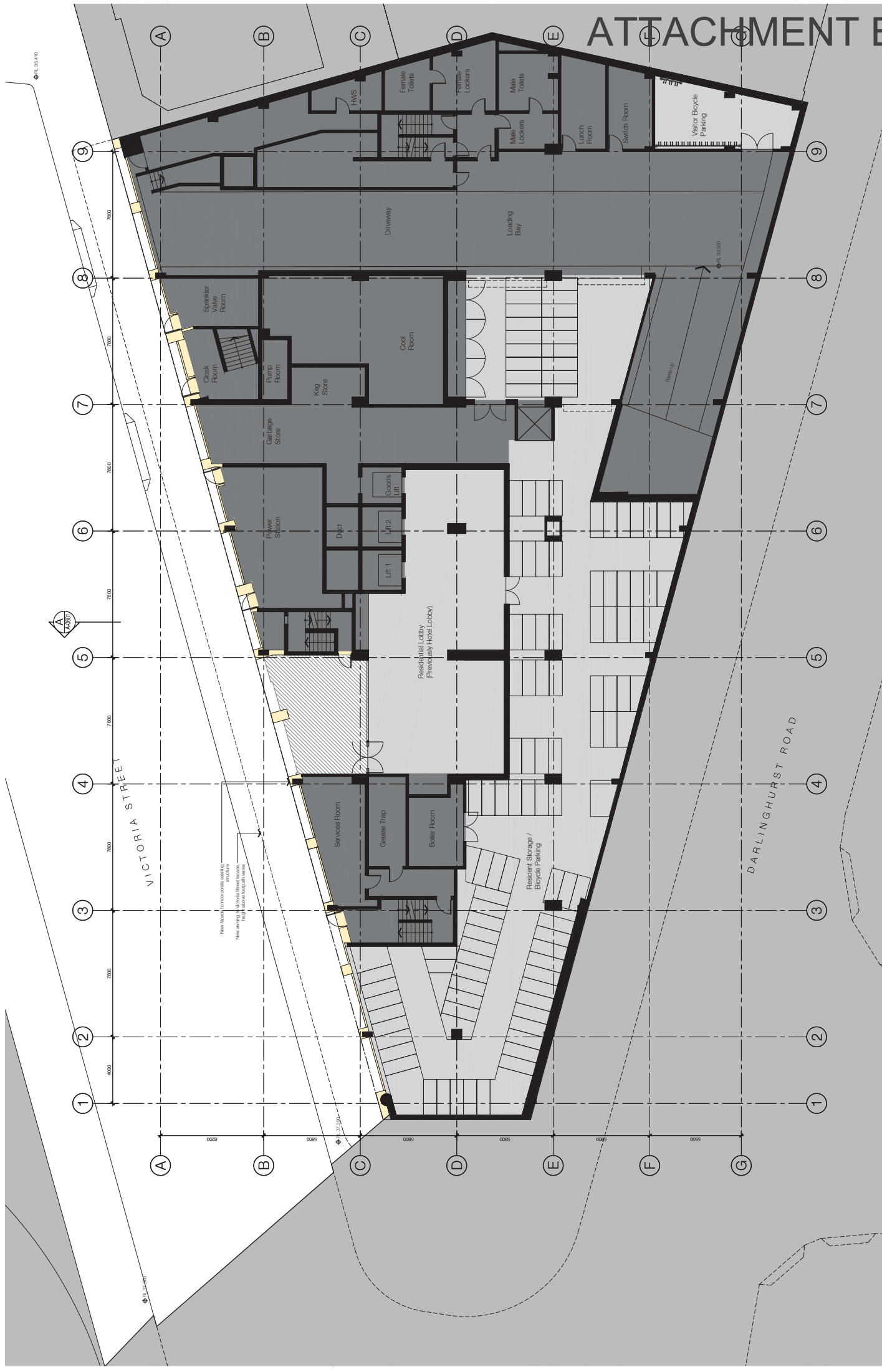
Author: J. [Name] Date: 30.10.2013
 Check: A. [Name] Date: 30.10.2013

FOR APPROVAL
 Signature: [Blank] Date: [Blank]



Level 2
 400 Collins Street
 2014 Australia
 P.O. Box 100
 Tel: 61 2 9291 9922
 www.bs.com.au

ATTACHMENT B



FOR APPROVAL

As per the conditions of the approval, the applicant must ensure that the proposed development is in accordance with the relevant provisions of the Planning and Environment Act 2001 and the relevant provisions of the Planning and Environment Regulations 2002.

Legend:

- Existing envelope to change proposed
- Existing envelope, change of use
- Existing envelope, demolished
- Asbestos to be removed

Scale: 1:100

Date: 30.10.2013

Drawn: SH

Checked: AH

Project: Mixed Use Development
111 Darlinghurst Road
Potts Point
Darlinghurst

Drawn No.: 4932

Revision: A-0203 / 02

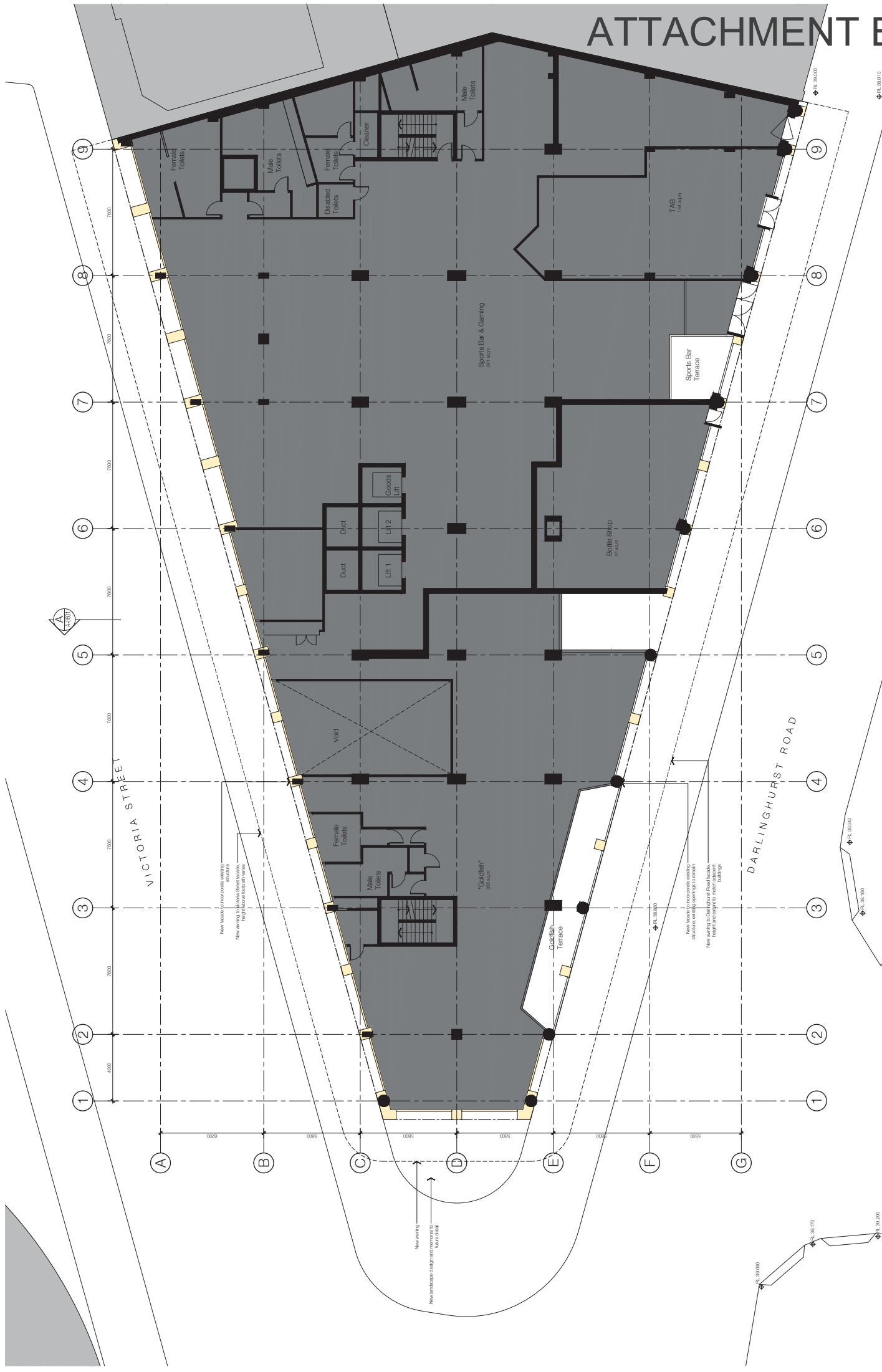
Sheet Size: A1

Scale: @ A1

Client: AH

Level: Level 2
400 Oxford Street
2011 Australia
P.O. Box 1000
www.p.com.au

ATTACHMENT B



FOR APPROVAL

Authorisation for this development is granted on the basis of the information provided in the application. The Council does not warrant the accuracy of the information provided. The Council is not responsible for any errors or omissions in this document. The Council is not responsible for any damage or loss arising from the use of this document. The Council is not responsible for any legal action taken against it in connection with this document.

Authorisation No. 718 Job No. 2024

Legend

- Existing envelope to change proposed
- Existing envelope, change of use
- Existing envelope, demolished
- As shown on site plan

Revision History

Rev.	Date	Revision	By	CHK
01	11.10.13	Prepared LIA issue	CP AH	
02	30.10.13	Stage 1 LIA issue	CP AH	

Project Information

Project: **Mixed Use Development**
111 Darlinghurst Road
Potts Point
Darwin NSW

Drawn: CP
Checked: CP
Date: 30.10.2013
Scale: 1:100
Sheet Size: @ A1

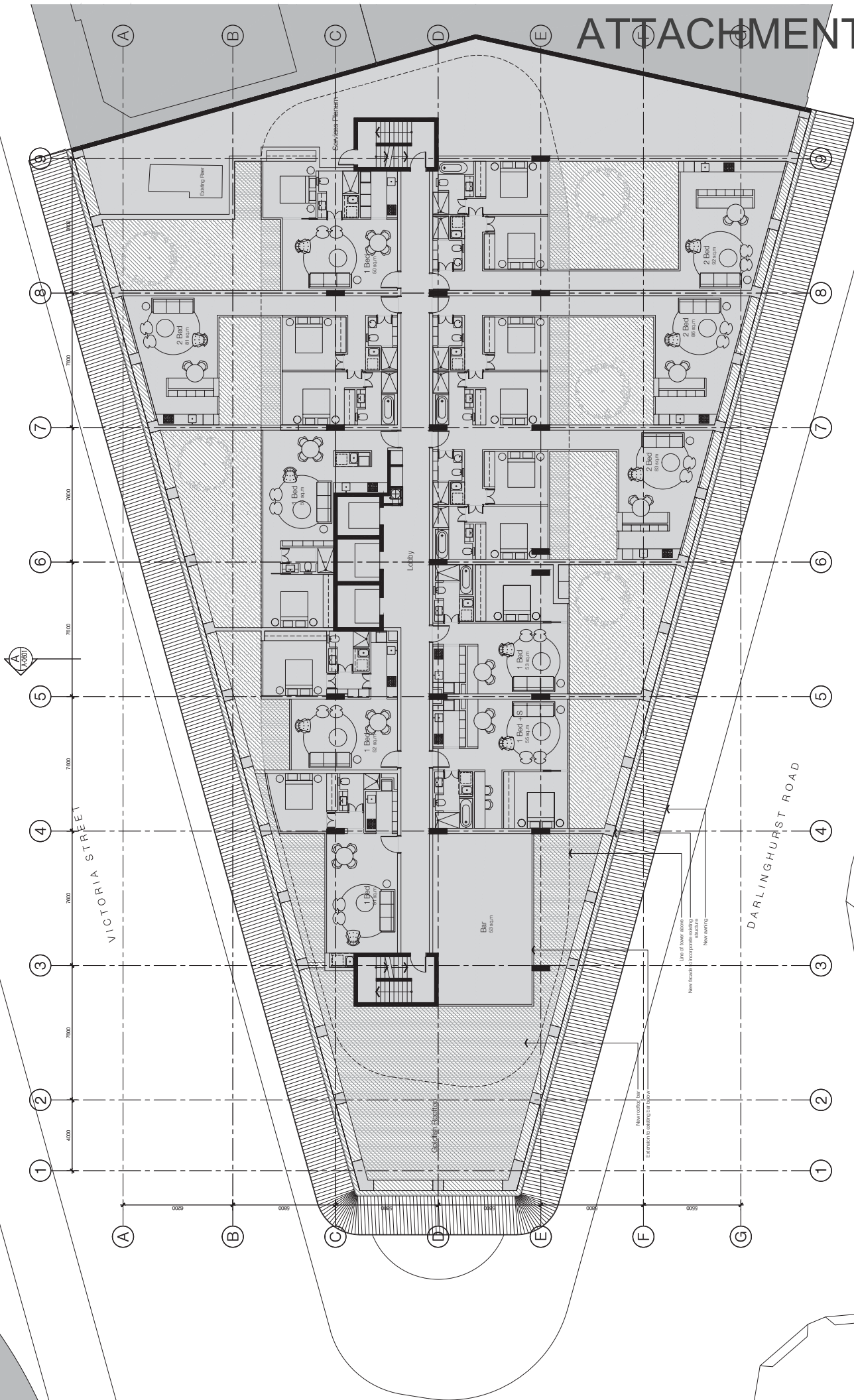
Submitters

Lot 62
400 Queen Street
2014 Australia
Tel: 61 2 9251 9922
www.p.com.au

Job No.: **4932**
Drawing No.: **A-0204 / 02**

Floor Plan
Ground

ATTACHMENT B



FOR APPROVAL

As shown on this plan, the proposed development is subject to the provisions of the Planning and Environment Act 2001 and the Planning and Environment Regulations 2002. The proposed development is subject to the provisions of the Planning and Environment Act 2001 and the Planning and Environment Regulations 2002. The proposed development is subject to the provisions of the Planning and Environment Act 2001 and the Planning and Environment Regulations 2002.

Legend:

- Existing envelopes to change proposed
- Existing envelopes, change of use
- Existing envelopes, demolished
- As shown on this plan

Scale: 1:1000

Project: Mixed Use Development
111 Darlinghurst Road
Potts Point
Darwin NSW

Drawn: CP
Checked: AH

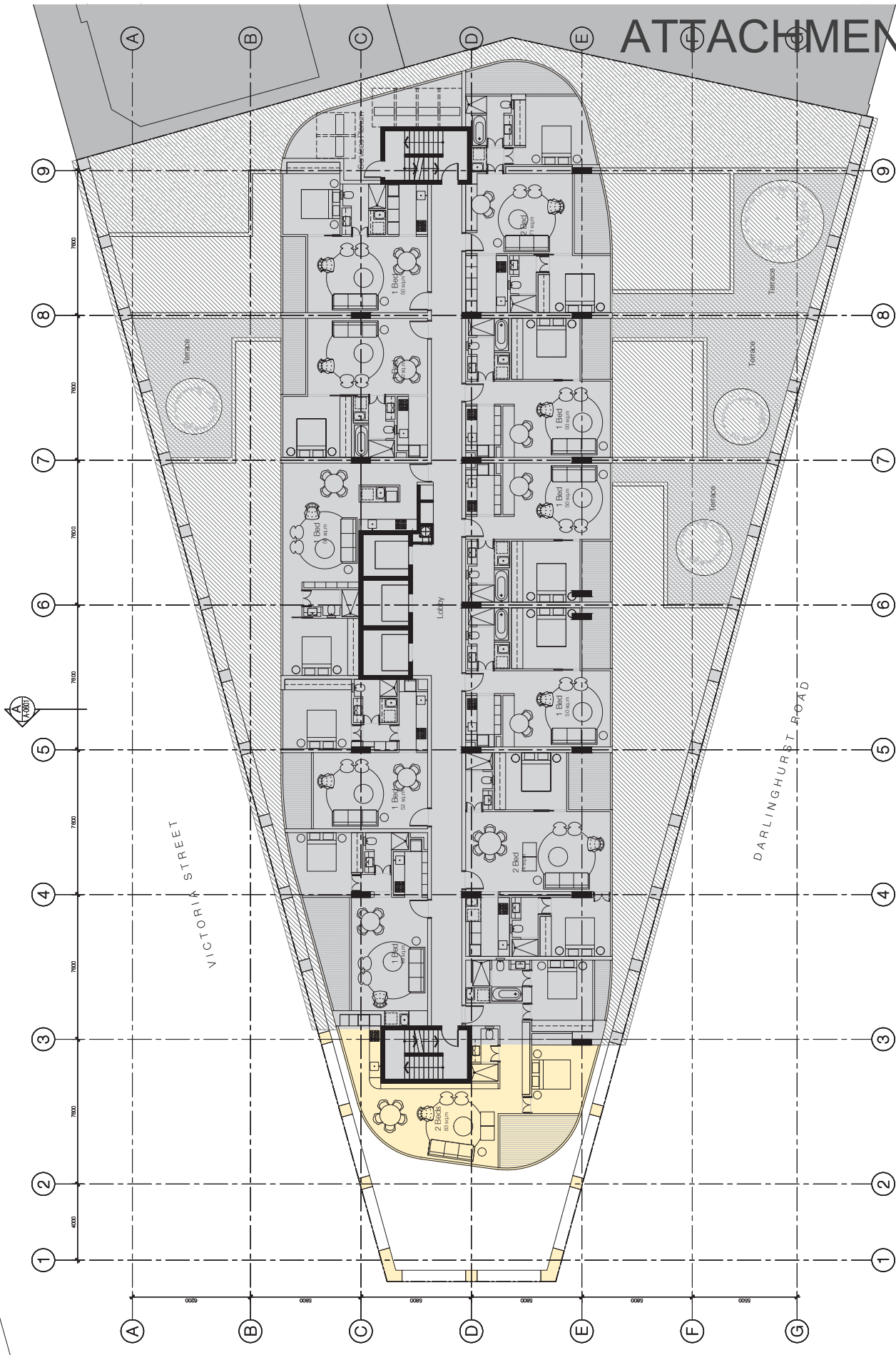
Scale: 1:1000
Sheet Size: @ A1

Date: 30.10.2013
Drawn: CP
Checked: AH

Job No.: 4932
Drawn No.: A-0205 / 02

Author: 400 O'Connell Street
2010 Australia
Tel: 61 2 9250 9222
www.p.com.au

ATTACHMENT B



FOR APPROVAL

Approved for use by the Council for the purpose of the development of the site. This approval is subject to the conditions of the development consent and the provisions of the Environmental Planning and Assessment Act 1979 and the Environmental Planning and Assessment Regulation 2000. This approval does not constitute a guarantee, warranty or representation of any kind by the Council. The Council is not responsible for the accuracy of the information provided in this document.

Project: **Mixed Use Development
111 Darlinghurst Road
Potts Point**

Drawn: **CP**

Check: **AH**

Scale: **1:100**

Date: **30.10.2013**

Sheet Size: **A1**

By: **CHL**

Rev. Date: **Revision**

By: **CHL**

Rev. Date: **Revision**

By: **CHL**

Rev. Date: **Revision**

By: **CHL**

Rev. Date: **Revision**

By: **CHL**

Rev. Date: **Revision**

By: **CHL**

Rev. Date: **Revision**

By: **CHL**

Rev. Date: **Revision**

By: **CHL**

Rev. Date: **Revision**

By: **CHL**

Rev. Date: **Revision**

By: **CHL**

Rev. Date: **Revision**

By: **CHL**

Rev. Date: **Revision**

By: **CHL**

Rev. Date: **Revision**

By: **CHL**

Rev. Date: **Revision**

By: **CHL**

Rev. Date: **Revision**

By: **CHL**

Rev. Date: **Revision**

By: **CHL**

Rev. Date: **Revision**

By: **CHL**

Rev. Date: **Revision**

By: **CHL**

Rev. Date: **Revision**

By: **CHL**

Rev. Date: **Revision**

By: **CHL**

Rev. Date: **Revision**

By: **CHL**

Rev. Date: **Revision**

By: **CHL**

Rev. Date: **Revision**

By: **CHL**

Rev. Date: **Revision**

By: **CHL**

Rev. Date: **Revision**

By: **CHL**

Rev. Date: **Revision**

By: **CHL**

Rev. Date: **Revision**

By: **CHL**

Rev. Date: **Revision**

By: **CHL**

Rev. Date: **Revision**

By: **CHL**

Rev. Date: **Revision**

By: **CHL**

Rev. Date: **Revision**

By: **CHL**

Rev. Date: **Revision**

By: **CHL**

Rev. Date: **Revision**

By: **CHL**

Rev. Date: **Revision**

By: **CHL**

Rev. Date: **Revision**

By: **CHL**

Rev. Date: **Revision**

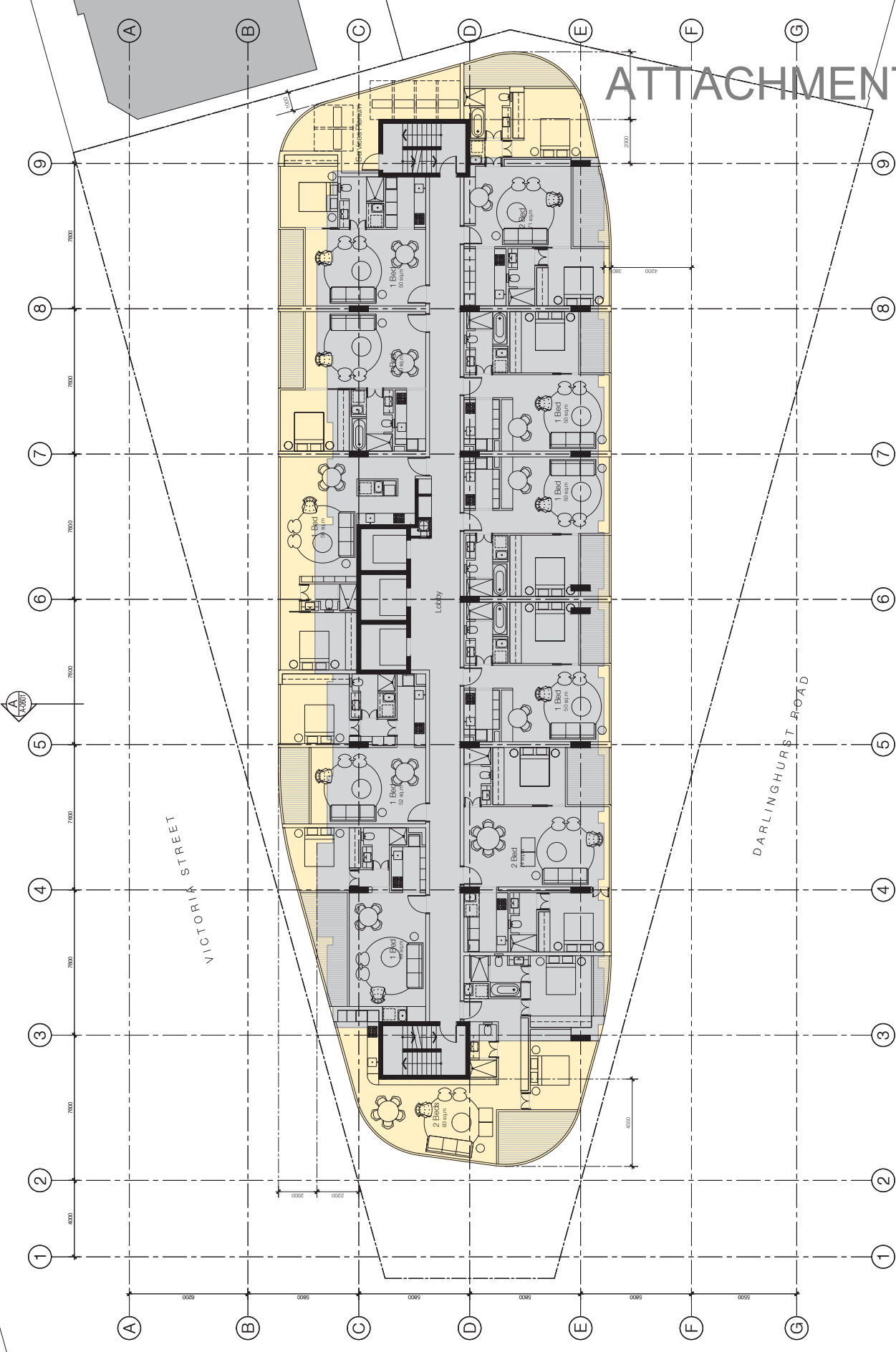
By: **CHL**

Rev. Date: **Revision**

By: **CHL**

Rev. Date: **Revision**

ATTACHMENT B



FOR APPROVAL

Approved for use only for the purposes of the development and shall not be used for any other purpose. It is the responsibility of the user to ensure that the information is accurate and complete. The user shall indemnify and hold the Council harmless from and against all and any claims, damages, losses and costs, including reasonable legal costs, which may be incurred by the Council as a result of the use of the information.

4932 A-0207 / 02

Drawn: CP
 Checked: AH
 Date: 30.10.2013
 Scale: 1:100
 Sheet Size: @ A1

Project: Mixed Use Development
 111 Darlinghurst Road
 Potts Point
 Downs North
Floor Plan:
 Typical, Levels 3-10

Rev.	Date	Position	By	CHK	Rev.	Date	Position	By	CHK
01	15.10.13	Prepared LSA Issue							
02	30.10.13	Stage 1 LSA Issue	CP	AH					

As per drawings: 0207 / 02

Approval Authority: 0207 / 02

FOR APPROVAL

FOR APPROVAL

Existing envelope to change proposed
 Existing envelope, change of use
 Existing envelope, amended
 Addition to existing envelope
 Architect: ARCHITECTS 7138 JARVIS ROAD, 2004

Rev. Date Reason
 01 15.10.13 Preliminary LPA Issue
 02 30.10.13 Stage 1 LPA Issue
 By: CHL
 CP: AH

Rev. Date Reason
 By: CHL

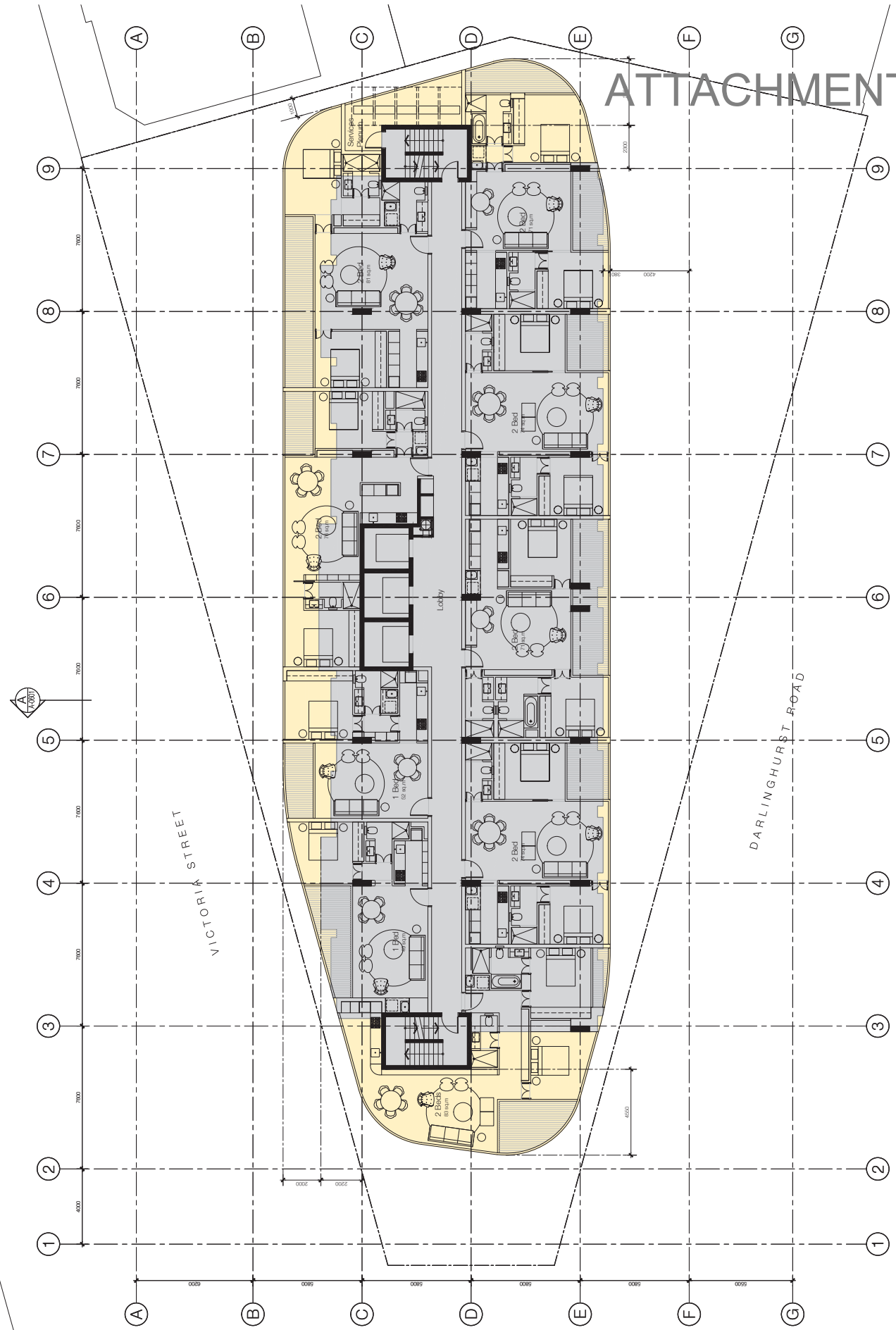
Rev. Date Reason
 By: CHL

Project: Mixed Use Development
 111 Darlinghurst Road
 Potts Point
 Drawing No: 4932
 Drawn: CP
 Checked: AH
 Date: 30.10.2013
 Scale: 1:100
 Sheet Size: @ A1

Floor Plan
 Typical, Levels 11 - 16

SUBMITTERS
 Level 2
 400 Queen Street
 2014 Australia
 Phone: +61 (0)2 9292 0222
 Fax: +61 (0)2 9292 0223
 www.p.com.au

ATTACHMENT B



Architect: ARCHITECTS 7138 JARVIS ROAD, 2004

Date: 30.10.2013
 Scale: 1:100
 Sheet Size: @ A1

Project: Mixed Use Development
 111 Darlinghurst Road
 Potts Point
 Drawing No: 4932
 Drawn: CP
 Checked: AH

Rev. Date Reason
 01 15.10.13 Preliminary LPA Issue
 02 30.10.13 Stage 1 LPA Issue
 By: CHL
 CP: AH

Rev. Date Reason
 By: CHL

Rev. Date Reason
 By: CHL

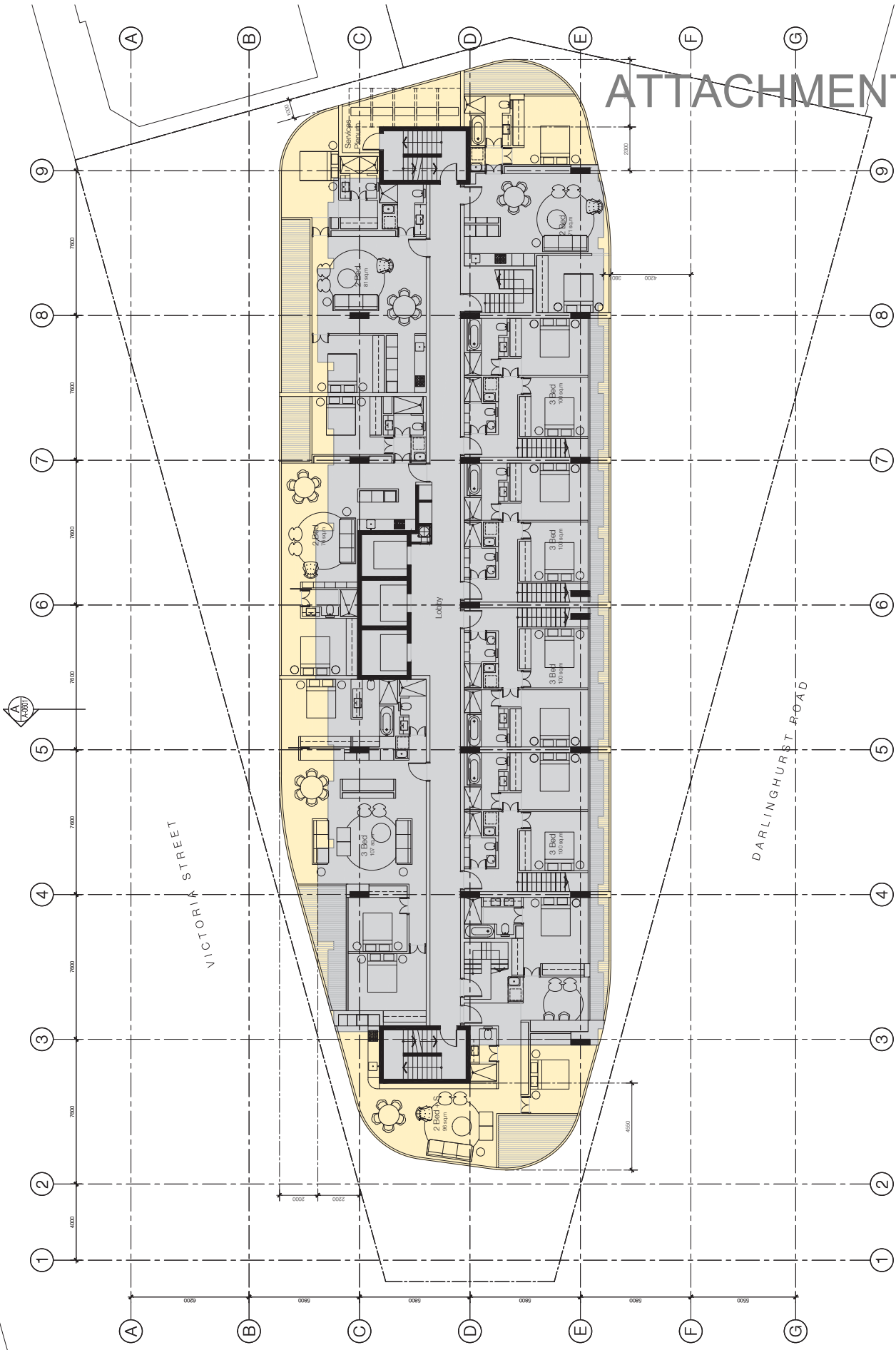
Rev. Date Reason
 By: CHL

Project: Mixed Use Development
 111 Darlinghurst Road
 Potts Point
 Drawing No: 4932
 Drawn: CP
 Checked: AH
 Date: 30.10.2013
 Scale: 1:100
 Sheet Size: @ A1

Floor Plan
 Typical, Levels 11 - 16

SUBMITTERS
 Level 2
 400 Queen Street
 2014 Australia
 Phone: +61 (0)2 9292 0222
 Fax: +61 (0)2 9292 0223
 www.p.com.au

ATTACHMENT B



FOR APPROVAL



- Existing envelope to change proposed
- Existing envelope, change of use
- Existing envelope, demolished
- Addition to existing envelope

Rev.	Date	Revision	By	CHK	Position
01	11.10.13	Prepared LPA issue	CP AH		
02	30.10.13	Stage 1 LPA issue	CP AH		

Rev.	Date	Revision	By	CHK	Position

Rev.	Date	Revision	By	CHK	Position

Rev.	Date	Revision	By	CHK	Position

Rev.	Date	Revision	By	CHK	Position

Rev.	Date	Revision	By	CHK	Position

Rev.	Date	Revision	By	CHK	Position

Rev.	Date	Revision	By	CHK	Position

Rev.	Date	Revision	By	CHK	Position

Rev.	Date	Revision	By	CHK	Position

Rev.	Date	Revision	By	CHK	Position

Rev.	Date	Revision	By	CHK	Position

Rev.	Date	Revision	By	CHK	Position

PROJECT
 Mixed Use Development
 111 Darlinghurst Road
 Potts Point
 Darlinghurst NSW

FLOOR PLAN
 Level 17

DATE
 30.10.2013

SCALE
 1:100

REVISIONS

Sheet Size
 @ A1

Author
 CP AH

Checker
 AH

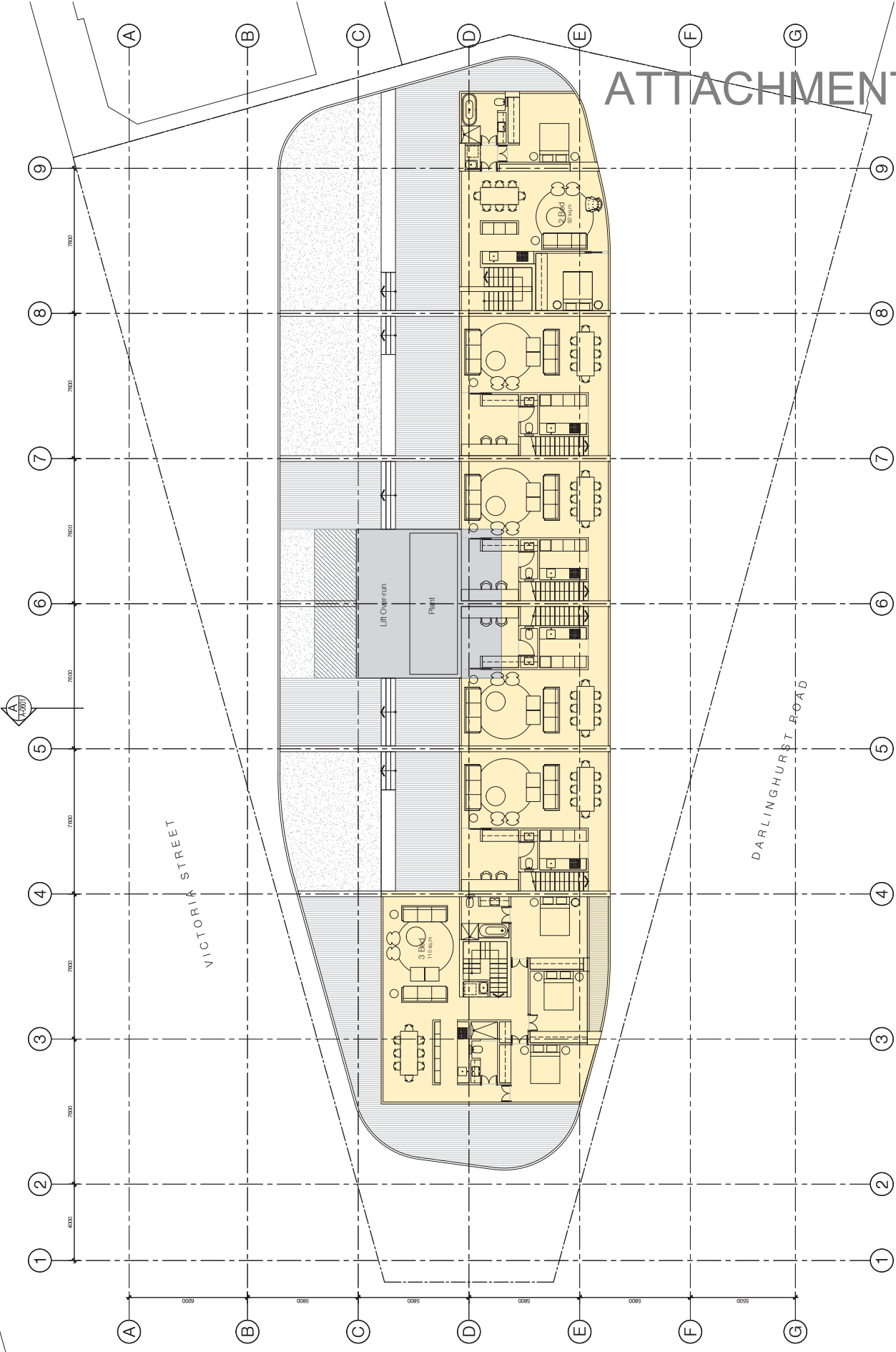
Drawn
 CP AH

Drawn No.
 4932

Drawn Date
 A-0210 / 02

Author
 Level 2
 400 Oxford Street
 2011 Australia
 Tel: 61 2 9232 9222
 www.p.com.au

ATTACHMENT B



FOR APPROVAL

Approved for use by the City of Sydney Council. This document is the property of the City of Sydney Council. It is to be used for the purposes of the project for which it was prepared. It is not to be used for any other purpose. The City of Sydney Council is not responsible for any errors or omissions in this document.

Standard Annotations:

- ① - Existing envelope, to change proposed
- ② - Existing envelope, change of use
- ③ - Existing envelope, demolished
- ④ - Addition to existing envelope

Authorisation: 718 / 2014 / 02

No.	Date	Revision	By	CHK	Rev.	Date	Revision	By	CHK
01	15.10.13	Final Design	JLH	CPH	CPH				
02	30.10.13	Stage 1 SA Issue	JLH	CPH	CPH				

Project: Mixed Use Development
111 Darlinghurst Road
Potts Point
Downstairs

Floor Plan: Level 18

Sheet Size: @ A1

Date: 30.10.2013
Scale: 1:100

Drawn: CP
Checked: AH

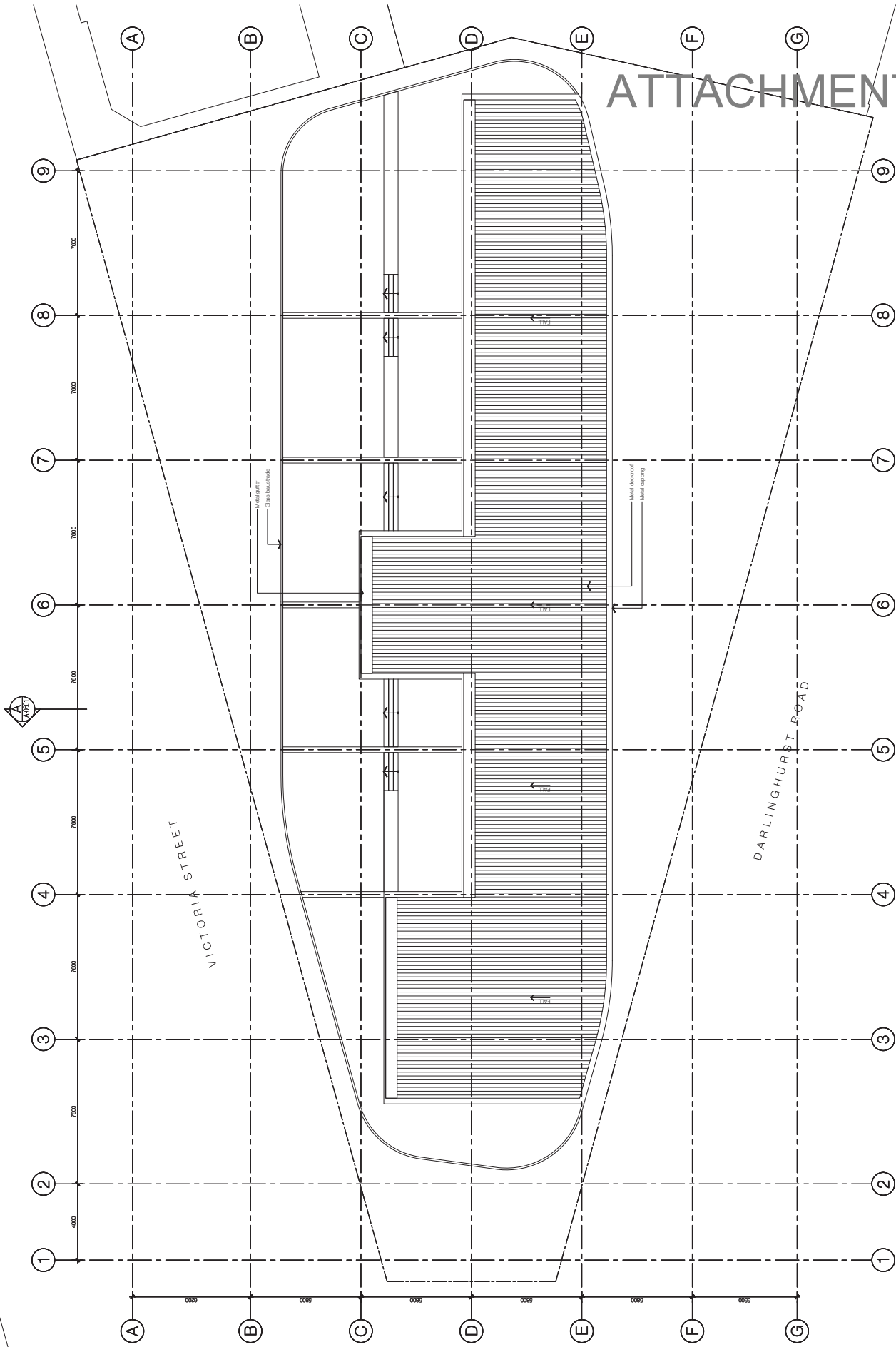
JOB NO.: 4932
Drawn No.: A-0211 / 02

Revision:

Scale: 1:100

Level 18
400 Oxford Street
2014 Australia
P 61 2 9200 9222
www.p.syd.nsw.gov.au

ATTACHMENT B



Rev.	Date	Revision	By	CHK	Rev.	Date	Revision	By	CHK	Rev.	Date	Revision	By	CHK	Rev.	Date	Revision	By	CHK
01	15.10.13	Prepared LPA Issue	CP	AH	02	20.10.13	Stage 1 LPA Issue	CP	AH	03	30.10.13	1:100	CP	AH	04	30.10.2013	1:100	CP	AH

<input type="checkbox"/> Existing envelope, to change proposed <input type="checkbox"/> Existing envelope, change of use <input checked="" type="checkbox"/> Existing envelope, identified <input type="checkbox"/> Addition to existing envelope	Author: JESSICA WEBB Date: 30/10/2013 Scale: 1:100 Drawn: CP Checked: AH Project: Mixed Use Development 111 Darlinghurst Road Potts Point Darlinghurst NSW Floor Plans Roof	Job No.: 4932 A-0212 / 02
------------------------------------------------------------------------------------------------------------------------------------------------------------------------------------------------------------------------------------------------------------	-----------------------------------------------------------------------------------------------------------------------------------------------------------------------------------------------------------	------------------------------

Project: Mixed Use Development 111 Darlinghurst Road Potts Point Darlinghurst NSW Floor Plans Roof	Date: 30.10.2013 Scale: 1:100 Drawn: CP Checked: AH	Job No.: 4932 A-0212 / 02
-------------------------------------------------------------------------------------------------------------------	--------------------------------------------------------------	------------------------------

Author: JESSICA WEBB Date: 30/10/2013 Scale: 1:100 Drawn: CP Checked: AH	Job No.: 4932 A-0212 / 02
--------------------------------------------------------------------------------------	------------------------------

FOR APPROVAL

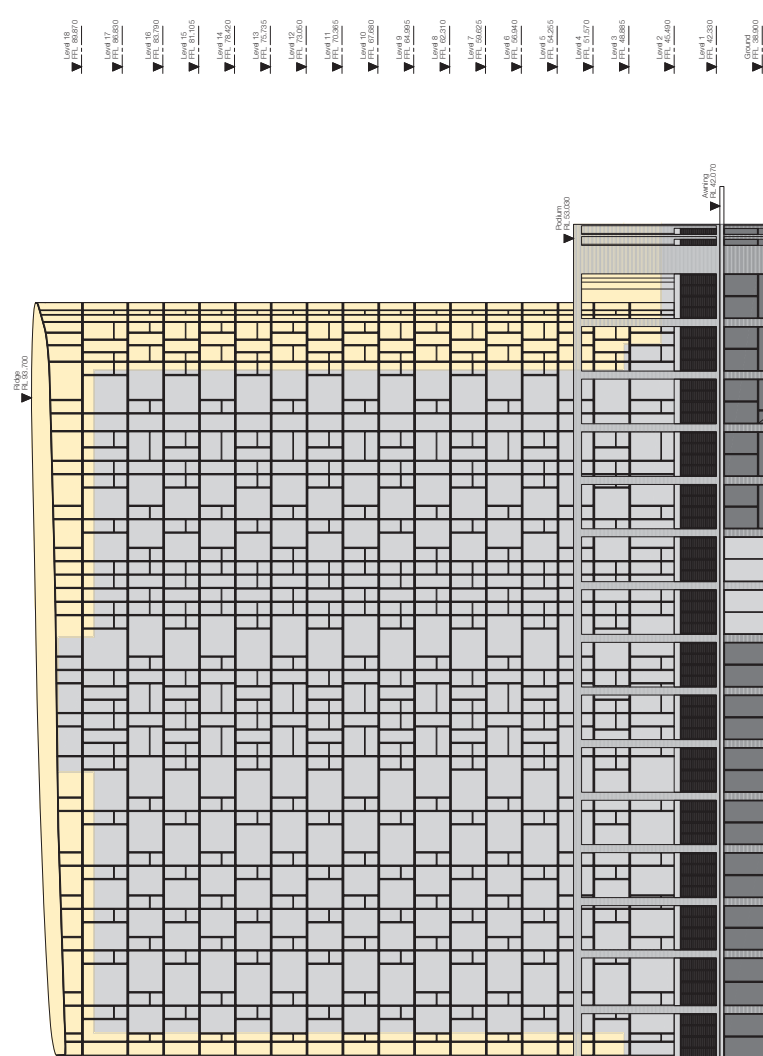
Author: JESSICA WEBB
 Date: 30/10/2013
 Scale: 1:100
 Drawn: CP
 Checked: AH

Job No.: 4932
 A-0212 / 02



Level 2
 400 Queen Street
 Sydney NSW 2016 Australia
 Tel: +61 (0)2 9250 9222
 Fax: +61 (0)2 9250 9223
 www.jwb.com.au

ATTACHMENT B



204 212 Main St West	East Street	214 220 Main St West	Victoria Street Darlinghurst Road Intersection	Darlinghurst Road
Rev. Date: 01/11/13 Preliminary IGA issue	Rev. Date: 02/20/13 Stage I GA issue	Rev. Date: By: CHL	Rev. Date: By: CHL	Rev. Date: By: CHL
By: CHL Position: CP AH	By: CHL Position: CP AH	By: CHL Position: CP AH	By: CHL Position: CP AH	By: CHL Position: CP AH
01	02			

Date: 30.10.2013	Scale: 1:200	Sheet Size: @ A1	Subscribers
Drawn: CP	Drawn: CP	Checked: AH	Drawn: CP
JOB NO. 4932	Drawn No. A-0503	Revision: / 02	
Project: Mixed Use Development 111 Darlinghurst Road Potts Point Darlinghurst Elevations West			

1. Authority of all drawings shall remain with the architect and shall not be used for any other purpose without the architect's written consent. The architect shall not be responsible for any errors or omissions on the drawings. The architect shall not be responsible for any errors or omissions on the drawings. The architect shall not be responsible for any errors or omissions on the drawings.

FOR APPROVAL

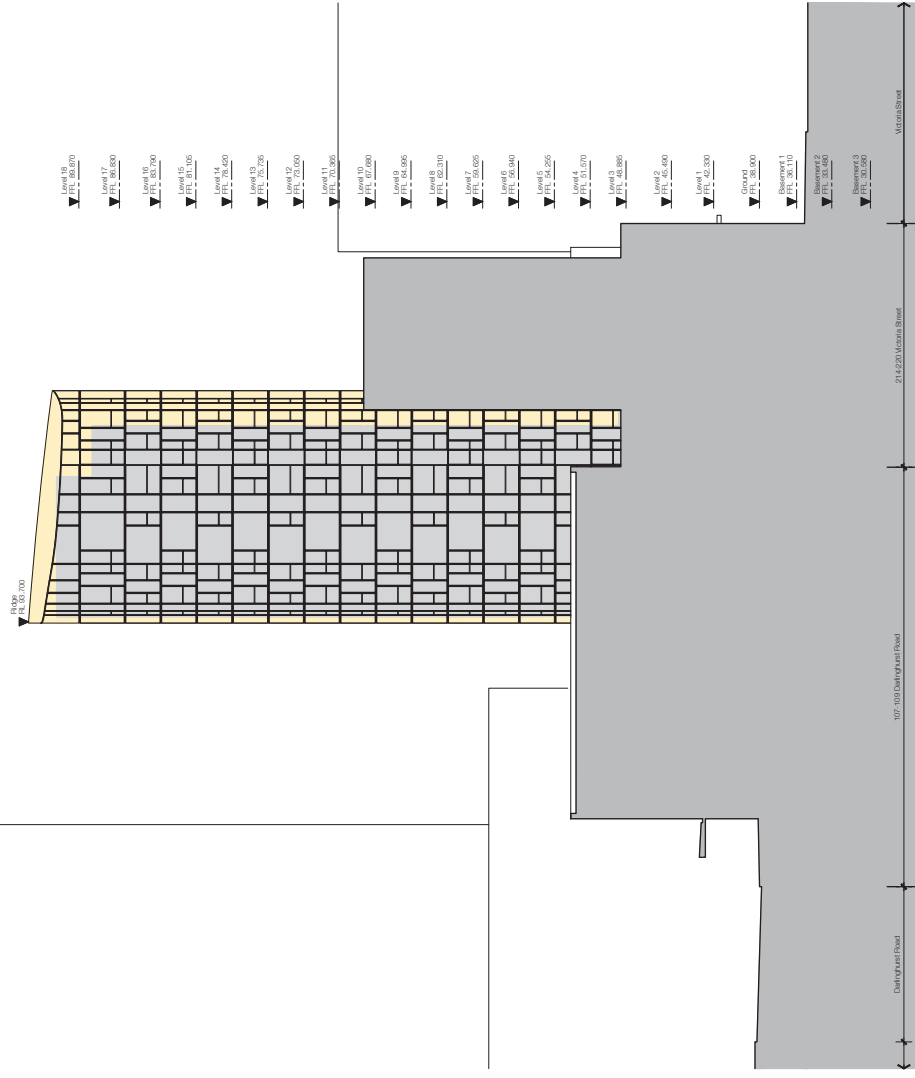
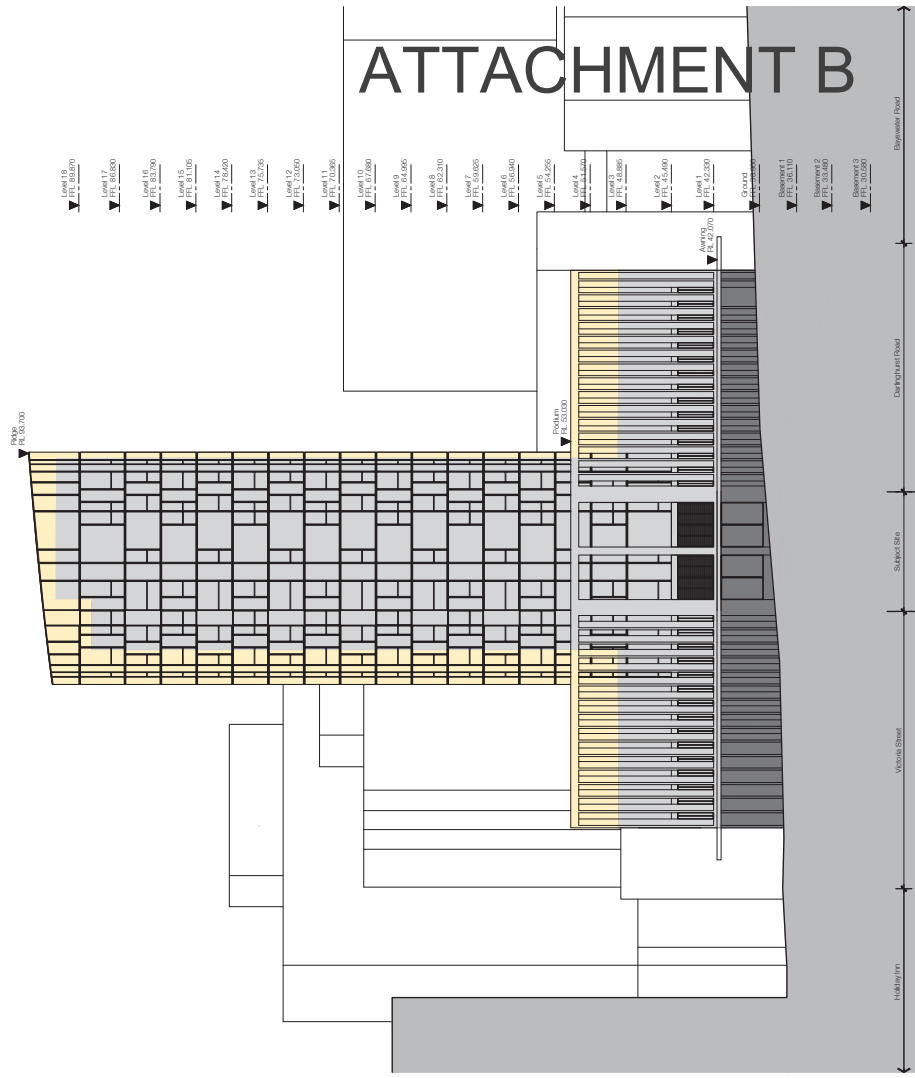
ADMINISTRATOR: 7198 John Hunter, 2006

ADDITIONAL COMMENTS: Addition to existing envelope





ATTACHMENT B



02 ELEVATION - South | Scale: 1/200

01 ELEVATION - North | Scale: 1/200

FOR APPROVAL

Legend:
 Existing envelope, no change proposed
 Existing envelope, change of use
 Existing envelope, demolished
 Addition to existing envelope

Revisions:
 01 11.10.13 Preliminary LPA Issue
 02 30.10.13 Stage 1 LPA Issue

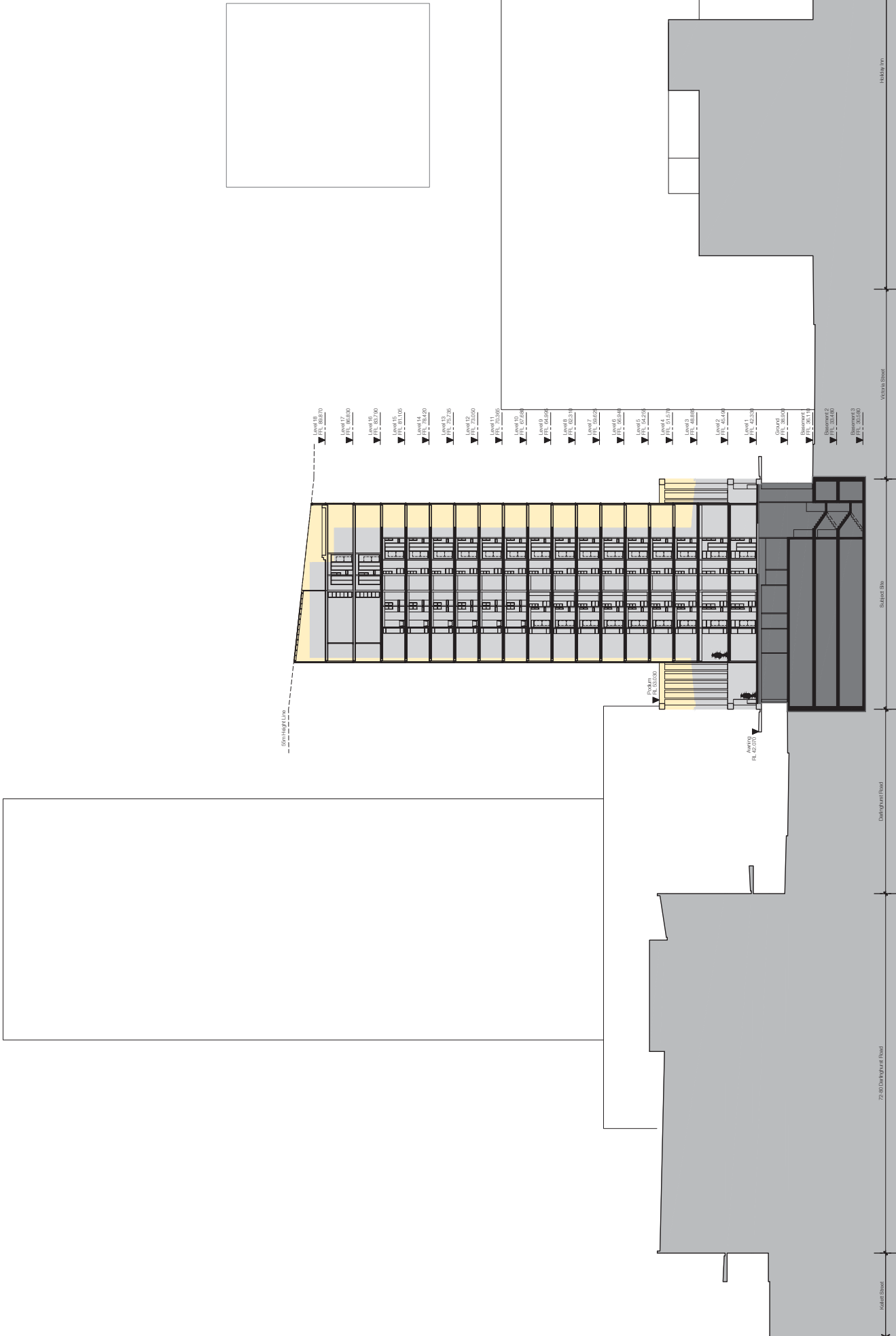
Project: Mixed Use Development
 111 Darlinghurst Road
 Potts Point
 Council: CP AH
 Drawn: CP AH
 Job No.: 4932
 Drawing No.: A-0501 / 02

Submittals:
 Sheet Size: @ A1
 Date: 30.10.2013
 Scale: 1:200
 Date: 30.10.2013
 Scale: 1:200

Author: Adam Jackson - 7198 | Jan Thum - 7056

Client: Land 2
 400 Crown Street
 2014 Australia
 F 61 2 8388 9922
 www.bj.com.au

ATTACHMENT B



<p>FOR APPROVAL</p> <p>Submitted: 28/01/2013 Asm: 132556 - 7198 - Jan Thum - 1006</p>	<p>Legend:</p> <ul style="list-style-type: none"> <input checked="" type="checkbox"/> Existing envelope, no change proposed <input type="checkbox"/> Existing envelope, change of use <input checked="" type="checkbox"/> Existing envelope, demolished <input type="checkbox"/> Addition to existing envelope 	<p>Rev. Date Revision</p> <p>01 11.10.13 Preliminary LCA Issue 02 30.10.13 Stage 1 LCA Issue</p>	<p>By: CHK Revision</p> <p>CP AH</p>	<p>Rev. Date Revision</p> <p>By: CHK</p>	<p>Rev. Date Revision</p> <p>By: CHK</p>	<p>Rev. Date Revision</p> <p>By: CHK</p>	<p>Rev. Date Revision</p> <p>By: CHK</p>	<p>Rev. Date Revision</p> <p>By: CHK</p>	<p>Project: Mixed Use Development 111 Darlington Road Potts Point Darlington NSW</p> <p>Section: Section A</p>	<p>Date: 30.10.2013</p> <p>Scale: 1:200</p> <p>Sheet Size: @ A1</p> <p>Drawn: CP</p> <p>Checked: AH</p> <p>Proj. No.: 4932</p> <p>Drawn No.: A-0601 / 02</p>	<p>Sub-Contractors:</p> <p>LWC2 400 Crown Street Potts Point NSW 2011 Australia Tel: 61 2 8300 9922 www.lwc.com.au</p>
-----------------------------------------------------------------------------------------------------------	-----------------------------------------------------------------------------------------------------------------------------------------------------------------------------------------------------------------------------------------------------------------------------------------------------------------------------------------------------------------	----------------------------------------------------------------------------------------------------------------------	---------------------------------------------	-------------------------------------------------	-------------------------------------------------	-------------------------------------------------	-------------------------------------------------	-------------------------------------------------	-----------------------------------------------------------------------------------------------------------------------------------------------------------------------------------------------	---------------------------------------------------------------------------------------------------------------------------------------------------------------------------------------------------------------	------------------------------------------------------------------------------------------------------------------------------------------------------------------------------------------------